

FL SWITCH 8TX - Industrial Ethernet Switch



2832218

<https://www.phoenixcontact.com/in/products/2832218>

Please be informed that the data shown in this PDF document is generated from our online catalog. Please find the complete data in the user documentation. Our general terms of use for downloads are valid.



Ethernet switch, 8 Ethernet ports on the front in RJ45 format, automatic detection of 10 or 100 Mbps data transmission speed, coupling of network segments with different transmission speeds, autocrossing function, DIN rail mountable

Commercial data

Item number	2832218
Packing unit	1 pc
Minimum order quantity	1 pc
Product key	DNN111
Catalog page	Page 201 (AX-2009)
GTIN	4017918938178
Weight per piece (including packing)	306.9 g
Weight per piece (excluding packing)	287.9 g
Country of origin	DE

FL SWITCH 8TX - Industrial Ethernet Switch



2832218

<https://www.phoenixcontact.com/in/products/2832218>

Technical data

Dimensions

Width	45 mm
Height	99 mm
Depth	112 mm

Material specifications

Color	green
Housing material	PA 6.6; V0; green Al

Mounting

Mounting type	DIN rail mounting
---------------	-------------------

Interfaces

Ethernet

Connection method	RJ45
Transmission speed	10/100 Mbps
Transmission physics	Ethernet in RJ45 twisted pair
Transmission length	100 m (per segment)
Signal LEDs	Data receive, link status
No. of channels	8

Potential-free signaling contact

Connection method	Plug-in/screw connection via COMBICON
-------------------	---------------------------------------

Product properties

Product type	Switch
Type	Book type

Insulation characteristics

Protection class	III (IEC 61140, EN 61140, VDE 0140-1)
------------------	---------------------------------------

Switch functions

Basic functions	Unmanaged switch / auto negotiation, complies with IEEE 802.3, store and forward switching mode
Signal contact control voltage	24 V DC (typical)
Signal contact control current	100 mA (typical)
Status and diagnostic indicators	LEDs: U _{S1} , U _{S2} (redundant voltage supply), link and activity per port
Additional functions	Autonegotiation

Security functions

Basic functions	Unmanaged switch / auto negotiation, complies with IEEE 802.3, store and forward switching mode
-----------------	---

FL SWITCH 8TX - Industrial Ethernet Switch



2832218

<https://www.phoenixcontact.com/in/products/2832218>

Electrical properties

Power consumption	3 W (maximum)
Local diagnostics	US1, US2 Supply voltage US1, US2 Green LED
	One LED per port Link active Green LED
	One LED per port Telegrams received Yellow LED
Maximum power dissipation for nominal condition	3 W
Test section	500 V AC 50 Hz 1 min.
Transmission medium	Copper

Supply

Supply voltage	24 V DC
Supply voltage range	18.5 V DC ... 30.2 V DC
Power supply connection	Via COMBICON, max. conductor cross section 2.5 mm ²
Residual ripple	3.6 V _{PP} (within the permitted voltage range)
Typical current consumption	125 mA (to U _S)

Function

Signal contact control voltage	24 V DC (typical)
Signal contact control current	100 mA (typical)

Environmental and real-life conditions

Ambient conditions

Degree of protection	IP20
Ambient temperature (operation)	0 °C ... 55 °C
Ambient temperature (storage/transport)	-20 °C ... 70 °C
Permissible humidity (operation)	30 % ... 95 % (non-condensing)
Permissible humidity (storage/transport)	30 % ... 95 % (non-condensing)
Vibration (operation)	in acc. with IEC 60068-2-6: 5g, 150 Hz
Air pressure (operation)	86 kPa ... 108 kPa (1500 m above sea level)
Air pressure (storage/transport)	66 kPa ... 108 kPa (3500 m above sea level)
Resistance to gases that may endanger the functions, in acc. with DIN 40046-36, DIN 40046-37	Sulfur dioxide (SO ₂) 10 ±0.3 cm ³ /m ³ , hydrogen sulfide (H ₂ S) 1 ±0.3 cm ³ /m ³ , at 25°C and 75% humidity and exposure of four days

Standards and regulations

Free from substances that could impair the application of coating	In acc. with VW specification
---	-------------------------------

EMC data

Conformance with EMC directives	IEC 61000-6-2 IEC 61000-4-2 (ESD) Criterion B
	IEC 61000-4-3 (immunity to radiated interference) Criterion A
	IEC 61000-4-4 (burst) Criterion B
	IEC 61000-4-5 (surge) Criterion B
	IEC 61000-4-6 (immunity to conducted interference) Criterion A
	IEC 61000-4-8 (immunity to magnetic fields) Criterion A

FL SWITCH 8TX - Industrial Ethernet Switch



2832218

<https://www.phoenixcontact.com/in/products/2832218>

	EN 55022 (emitted interference) Criterion A
Noise immunity	EN 61000-6-2:2005
Electromagnetic compatibility	Conformance with EMC directive 89/336/EC
Noise emission	EN 61000-6-4

System properties

Functionality

Basic functions	Unmanaged switch / auto negotiation, complies with IEEE 802.3, store and forward switching mode
-----------------	---

Signaling

Status display	LEDs: U _{S1} , U _{S2} (redundant voltage supply), link and activity per port
----------------	--

FL SWITCH 8TX - Industrial Ethernet Switch



2832218

<https://www.phoenixcontact.com/in/products/2832218>

Environmental product compliance

EU REACH SVHC

REACH candidate substance (CAS No.)	No substance above 0.1 wt%
-------------------------------------	----------------------------

FL SWITCH 8TX - Industrial Ethernet Switch



2832218

<https://www.phoenixcontact.com/in/products/2832218>

Accessories

FL CAT5 PATCH 0,3 - Patch cable

2832250

<https://www.phoenixcontact.com/in/products/2832250>

Patch cable, CAT5, assembled, 0.3 m



FL CAT5 PATCH 0,5 - Patch cable

2832263

<https://www.phoenixcontact.com/in/products/2832263>

Patch cable, CAT5, assembled, 0.5 m



FL SWITCH 8TX - Industrial Ethernet Switch

2832218

<https://www.phoenixcontact.com/in/products/2832218>

FL CAT5 PATCH 1,0 - Patch cable

2832276

<https://www.phoenixcontact.com/in/products/2832276>

Patch cable, CAT5, assembled, 1 m



FL CAT5 PATCH 1,5 - Patch cable

2832221

<https://www.phoenixcontact.com/in/products/2832221>

Patch cable, CAT5, assembled, 1.5 m



FL SWITCH 8TX - Industrial Ethernet Switch

2832218

<https://www.phoenixcontact.com/in/products/2832218>

FL CAT5 PATCH 2,0 - Patch cable

2832289

<https://www.phoenixcontact.com/in/products/2832289>

Patch cable, CAT5, assembled, 2 m



FL CAT5 PATCH 3,0 - Patch cable

2832292

<https://www.phoenixcontact.com/in/products/2832292>

Patch cable, CAT5, assembled, 3 m



FL SWITCH 8TX - Industrial Ethernet Switch

2832218

<https://www.phoenixcontact.com/in/products/2832218>

FL CAT5 PATCH 5,0 - Patch cable

2832580

<https://www.phoenixcontact.com/in/products/2832580>

Patch cable, CAT5, assembled, 5 m



FL CAT5 PATCH 7,5 - Patch cable

2832616

<https://www.phoenixcontact.com/in/products/2832616>

Patch cable, CAT5, assembled, 7.5 m



FL SWITCH 8TX - Industrial Ethernet Switch

2832218

<https://www.phoenixcontact.com/in/products/2832218>

FL CAT5 PATCH 10,0 - Patch cable

2832629

<https://www.phoenixcontact.com/in/products/2832629>

Patch cable, CAT5, assembled, 10 m



FL CAT6 PATCH 12,5 - Patch cable

2891369

<https://www.phoenixcontact.com/in/products/2891369>

Patch cable, CAT6, preassembled, 12.5 m



FL SWITCH 8TX - Industrial Ethernet Switch



2832218

<https://www.phoenixcontact.com/in/products/2832218>

FL CAT6 PATCH 15,0 - Patch cable

2891372

<https://www.phoenixcontact.com/in/products/2891372>



Patch cable, degree of protection: IP20, cable length: 15 m, number of positions: 8, 1 Gbps, CAT6, Ethernet

FL CAT6 PATCH 20,0 - Patch cable

2891576

<https://www.phoenixcontact.com/in/products/2891576>



Patch cable, degree of protection: IP20, cable length: 20 m, number of positions: 8, 1 Gbps, CAT6, Ethernet

FL SWITCH 8TX - Industrial Ethernet Switch



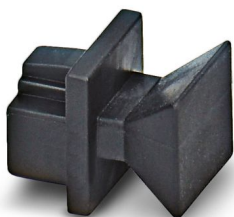
2832218

<https://www.phoenixcontact.com/in/products/2832218>

FL RJ45 PROTECT CAP - Dust protection

2832991

<https://www.phoenixcontact.com/in/products/2832991>



Dust protection caps for RJ45 socket

FL PLUG RJ45 GR/2 - RJ45 connector

2744856

<https://www.phoenixcontact.com/in/products/2744856>



RJ45 connector, design: RJ45, degree of protection: IP20, number of positions: 8, 1 Gbps, CAT5 (IEC 11801:2002), material: Plastic, connection method: Crimp connection, connection cross section: AWG 26- 24, cable outlet: straight, color: gray, Ethernet

FL SWITCH 8TX - Industrial Ethernet Switch



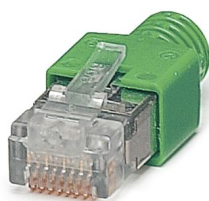
2832218

<https://www.phoenixcontact.com/in/products/2832218>

FL PLUG RJ45 GN/2 - RJ45 connector

2744571

<https://www.phoenixcontact.com/in/products/2744571>

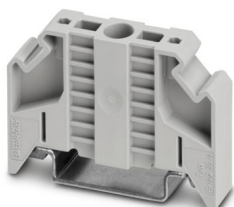


RJ45 connector, design: RJ45, degree of protection: IP20, number of positions: 8, 1 Gbps, CAT5 (IEC 11801:2002), material: Plastic, connection method: Crimp connection, connection cross section: AWG 26- 24, cable outlet: straight, color: green, Ethernet

E/NS 35 N - End bracket

0800886

<https://www.phoenixcontact.com/in/products/0800886>



End clamp, width: 9.5 mm, color: gray

FL SWITCH 8TX - Industrial Ethernet Switch



2832218

<https://www.phoenixcontact.com/in/products/2832218>

FL CRIMPTOOL - Assembly tool

2744869

<https://www.phoenixcontact.com/in/products/2744869>

Crimping pliers, for assembling the RJ45 plugs FL PLUG RJ45..., for assembly on site



Phoenix Contact 2024 © - all rights reserved

<https://www.phoenixcontact.com>

PHOENIX CONTACT (I) Pvt. Ltd.

A-58/2, Okhla Industrial Area, Phase - II, New Delhi-110 020

+91.1275.71420

info@phoenixcontact.co.in